

aerial lifts & telehandlers



PRODUCT RANGE OVERVIEW

 **snorkel**[™]



CELEBRATING

1959

60

2019

INNOVATIVE YEARS

 snorkel

Snorkel is a leading global manufacturer of aerial work platforms. Our comprehensive range of aerial lifts provides safe and efficient working at height, from 2 metres to 40 metres. We have the perfect solution for any application, from interior building maintenance through to the toughest construction job site.

Founded by Art Moore in 1959, Snorkel has a proud heritage of finding practical solutions to safely working at height. Our success is built on staying true to our core values, which influence everything we do. Above all, we believe in maintaining 100% focus on our customers.

From our roots within the firefighting industry, Snorkel has always pushed the boundaries of design, and that spirit of innovation continues today. Snorkel is constantly finding new solutions to working at height and new ways to enhance the safety and productivity benefits delivered by aerial work platforms.

Snorkel's philosophy is "keep it simple" – we manufacture robust, reliable machines that take you to wherever you need to be, in the most efficient and safe manner possible. We build aerial lifts that

meet your needs without complicating your working life; Snorkel lifts are simple to use, simple to maintain and simple to repair.

We work hard to stay closer to our customers - the global Snorkel team is augmented by a network of distributors and service agents across the world. Wherever you are, Snorkel can provide responsive, expert advice in your language, plus fast access to spare parts and product support.

With access to a vast portfolio of financing solutions, Snorkel offers a range of attractive options to enable you to purchase Snorkel machines, in a manner tailored to suit your individual business needs.

Find out more about our products and services at **www.snorkellifts.com**



S3006P/S3008P/S3010P

Available in three heights, the S3006P, S3008P and S3010P are simple, mini scissor lifts that can be pushed between jobs. These lightweight lifts can pass through a single doorway and are fitted with non-marking casters for easy movement. An auto-brake system secures the lift when working at height. Saloon-door style entry gates provide easy access to the platform, even when carrying tools.



S3010E

The self-propelled S3010E is ideal for internal facilities maintenance in large buildings. Compact dimensions and a zero inside turning radius make it ideal for working in tight spaces, and it is light enough to be carried in elevators. The S3010E can be driven at full height, and features proportional 'point & go' joystick controls for ease of use.



S3215L

The lightweight S3215L electric scissor lift doesn't compromise on performance or durability. It delivers a working height of 6.4m, and can lift 304kg, yet weighs only 952kg. Sharing many features with Snorkel's electric scissor lift family, the S3215L blends the low floor loading benefits of a lightweight lift with the long working life of a full-size electric slab scissor lift.

LIGHTWEIGHT SCISSOR LIFTS

Snorkel lightweight scissor lifts are designed to provide a safe solution to low level working at height, and where a low floor loading is required. These lifts offer an alternative to traditional low level solutions, such as ladders, scaffolding towers and podiums, delivering many additional safety and productivity benefits.

Available as push-around or self-propelled units, Snorkel lightweight scissor lifts are constructed from steel, and incorporate many of the same features and components as our larger electric scissor lifts, ensuring a long working life.

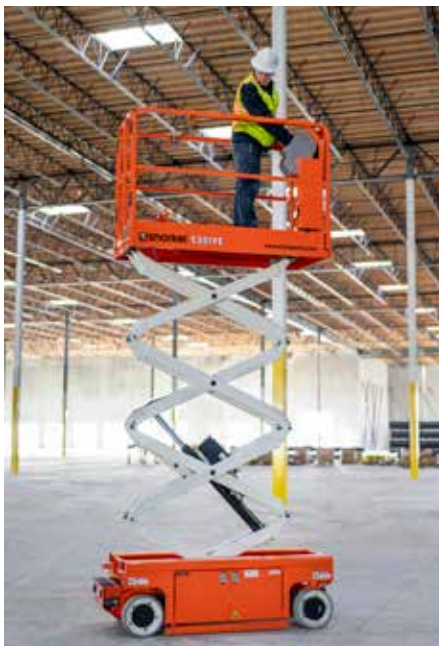
Suitable for use on construction jobsites, as well as in facilities maintenance applications, these lightweight lifts can be easily transported around multi-storey buildings in passenger elevators, thanks to their low weight and compact dimensions.

	S3006P	S3008P	S3010P	S3010E	S3215L
max. working height	4.0m	4.5m	5.0m	5.0m	6.6m
platform capacity	240kg	240kg	240kg	227kg	305kg
stowed height	1.7m	1.8m	1.8m	1.8m	1.9m
overall length	1.2m	1.2m	1.2m	1.26m	2.1m
overall width	0.75m	0.75m	0.75m	0.77m	0.81m
weight	310kg	350kg	370kg	495kg	952kg

NEW



Snorkel S3019E



S3019E

The Snorkel S3019E has a stowed height of 1.79m, meaning it can easily pass through doorways without folding handrails. This all-electric lift features a low step-in height thanks to the sunken scissor stack that stows inside the chassis. The S3019E can lift up to 250kg to a platform height of up to 7.6m, and weighs just 1,580kg.

ELECTRIC DRIVE SLAB SCISSOR LIFTS

The new Snorkel S3019E redefines the popular electric slab scissor lift. Featuring all electric drive and electric steering, this zero-emission lift has no hydraulics hoses, eliminating the risk of leaks. Patent pending, the revolutionary design includes a sunken scissor stack that stows entirely inside the chassis, delivering a low platform step in height, and a lower stowed height for passing through doorways without the need for folding guardrails.

The S3019E has a zero inside turning radius for maximum manoeuvrability and shares many of the same features as Snorkel's hydraulic drive slab scissor lift family, including a roll-out extension deck, saloon-door style entry gates, and swing-out service trays.

	S3019E
max. working height	7.79m
platform capacity	250kg
stowed height	1.76m
stowed length	1.91m
width	0.77m
weight	1581kg



S3215E/S3219E

The Snorkel S3219E is a compact and nimble electric scissor lift with a working height of 7.79m and a lift capacity of 250kg. It can be driven through a standard doorway, and can be used outdoors by one person. Sharing the same features, the smaller Snorkel S3215E delivers a working height of 6.6m, but can lift up to 272kg.



S3220E/S3226E

The Snorkel S3220E delivers a working height of up to 8.1m and a platform capacity of 407kg. Featuring a 0.91m roll-out telescopic extension deck and saloon-door style entry gates as standard, the S3220E can climb gradients of 25%. The S3226E utilizes the same chassis as the S3220E, and can lift 250kg to a working height of 9.9m.



S4726E/S4732E

Offering the highest lift capacity in the Snorkel electric scissor lift family, the S4726E can lift an impressive 454kg to a working height of 9.8m, making it ideal for slab applications requiring additional capacity. The largest lift in the family, the Snorkel S4732E can lift 350kg to a working height of 11.8m.

HYDRAULIC DRIVE SLAB SCISSOR LIFTS

Snorkel hydraulic drive slab scissor lifts are designed to deliver low total ownership costs. Packed with features that benefit both the owner and operator, Snorkel slab scissor lifts are setting a new standard within the industry.

A dual shear scissor stack and upsized pins provides increased rigidity, and the all-steel construction is robust and durable for a long working life. High quality components increase machine reliability, and upsized kingpins minimize the risk of damage on-site. A fixed upper control box reduces the risk of theft or damage, and includes an integrated power outlet for hand tools. Saloon-door style entry gates are fitted as standard for easy access into the platform, even when carrying tools.

Telescopic roll-out deck extensions maximize the working area, and twin side doors provide easy 'inside-out' access to key components, even when space is limited. Snorkel's smooth, proportional operating system gives you precise control where you need it most - and deep cycle batteries ensure your Snorkel electric scissor lift keeps working as long as you do.

	S3215E	S3219E	S3220E	S3226E	S4726E	S4732E
max. working height	6.6m	7.79m	8.1m	9.9m	9.8m	11.8m
platform capacity	272kg	250kg	407kg	250kg	454kg	350kg
stowed height	2.02m	2.11m	2.17m	2.3m	2.3m	2.39m
overall length	1.78m	1.78m	2.3m	2.3m	2.3m	2.3m
overall width	0.81m	0.81m	0.81m	0.81m	1.19m	1.19m
weight	1227kg	1614kg	2045kg	2045kg	2250kg	2693kg



S2255RT/S2755RT

The Snorkel S2255RT and S2755RT narrow diesel scissor lifts are specifically designed to work in constricted areas where a standard width lift would have difficulties. Designed to handle rough terrain with ease, the lifts have powerful 4 wheel drive and an oscillating rear axle.



S2770RT/S3370RT/S3970RT

Lightweight and compact, the S2770RT, S3370RT & S3970RT are ideal for outdoor work in confined spaces between buildings. With excellent ground clearance and an oscillating axle, they can tackle rough terrain with ease, and are equipped with auto level outriggers and a 1.2m roll-out deck extension as standard.



SL26SL/SL30SL SPEED LEVEL

The SL26SL provides a safe working load of 680kg and a working height of 10m. The 1.72m x 3.66m platform comes with a 0.91m deck extension for additional reach. The SL30SL provides a working height of up to 11m, on a spacious 1.72m x 4.23m deck, with lift capacity of 590kg. Both models are driveable at full height, even on compound slopes, such as car park ramps.

ROUGH TERRAIN SCISSOR LIFTS

The Snorkel S-RT series is a full line of compact diesel-powered rough terrain scissor lifts. All lifts in the series deliver excellent deck space, load capacity and superb terrain capabilities - and they are all equipped with powerful four-wheel drive to handle rough terrain.

Snorkel compact scissor lifts are also available in bi-energy, for the ultimate job site flexibility – work on a building’s exterior, then take the same machine indoors for fitting out. Switching to battery power can also help you meet increasing laws and regulations on noise and emissions.

When other machines can’t make the grade, you can rely on the Snorkel Speed Level. This sigma lift can climb gradients of up to 50%, and offers automatic self-levelling without the need for outriggers. Combined with superb ground clearance, excellent lift capacity and powerful 4 wheel drive, the Snorkel Speed Level can handle the toughest of job site conditions.

	S2255RT	S2755RT	S2770RT	S3370RT	S3970RT	SL26SL	SL30SL
max. working height	8.5m	10.1m	10.1m	12.0m	13.8m	10.0m	11.0m
platform capacity	420kg	300kg	580kg	450kg	350kg	680kg	590kg
stowed height	2.35m	2.35m	2.59m	2.7m	2.95m	2.6m	2.6m
overall length	3.3m	3.3m	3.4m	3.4m	3.4m	3.79m	4.3m
overall width	1.45m	1.45m	1.8m	1.8m	1.8m	2.13m	2.13m
weight	2410kg	2750kg	2800kg	3620kg	3790kg	3500kg	3400kg



UL25/UL32/UL40

The robust and compact UL Series push-around mast lifts easily pass through a standard doorway and offer a small outrigger footprint. Our telescopic Girder Lock mast delivers safe and stable working heights of up to 14.1m. Non-marking casters and an easy-loader system for transport come as standard.



TM12

The original self-propelled telescopic mast lift remains popular the world over for its versatility and durability. The Snorkel TM12 can be driven through standard doorways and carried in passenger elevators - yet will still lift two people with tools to a safe working height of 5.6 metres.



TM12E/TM16E

The TM12E/TM16E features an electric drive system that delivers longer duty cycles than the hydraulic drive version and delivers improved efficiency on the jobsite. With a zero inside turning radius, the TM12E/TM16E is ideal for working in confined spaces, and can easily pass through a standard doorway and travel in an elevator. The standard 0.51m roll-out deck extension provides additional reach.

MAST LIFTS

Designed for contractors and facilities maintenance professionals, Snorkel mast lifts are lightweight, portable work platforms. Snorkel's telescopic Girder Lock mast design, utilized in the UL range, delivers superb stability and reach coupled with excellent lift capacity.

Where the convenience of a self-propelled unit is preferred, the Snorkel TM12 provides the ideal telescopic mast lift solution for most applications. The hydraulic drive TM12 can be driven through standard interior doorways and carried in passenger elevators - yet will still lift two people with tools. The TM12 is also now offered as the TM12E and TM16E with electric drive for increased efficiency on the jobsite.

	UL25	UL32	UL40	TM12	TM12E	TM16E
max. working height	9.6m	11.7m	14.1m	5.6m	5.65m	6.87m
platform capacity	159kg	136kg	136kg	227kg	227kg	227kg
stowed height	1.99m	2.51m	2.9m	1.62m	1.67m	1.67m
overall length	1.26m	1.32m	1.32m	1.34m	1.37m	1.37m
overall width	0.74m	0.74m	0.74m	0.76m	0.76m	0.76m
weight (AC)	390kg	435kg	470kg	-	-	-
weight (DC)	420kg	465kg	500kg	830kg	840kg	1,105kg



MB20J/MB26J

The ultra-narrow MB-series provides a superb working envelope in very confined interior spaces. Ideal for applications in tight spots which require “up and over” capabilities, the MB-series delivers 360° mast rotation, with added outreach from the articulating jib.



A38E

Lightweight but durable and reliable, the A38E offers class-leading performance, with a working height up to 13.5m and up to 6.1m of outreach. The up-and-over articulated boom design provides the operator with a superb working envelope, and now features powered platform rotation and Snorkel Guard™ as standard.



A46JE

This 2WD, battery-electric version of the A46JRT is a versatile boom lift capable of working to heights up to 16.1m. With a working outreach of 7.35m and a jib length of 1.5m, this self propelled boom is a highly versatile performer. The spacious 1.83m x 1m platform can lift two people with tools and offers powered 160° rotation.

ELECTRIC BOOM LIFTS

Snorkel's industry-leading A-series electric articulating boom lifts combine superb manoeuvrability with clean and quiet operation, delivering working heights of up to 16m from zero emission, battery-powered machines.

Designed for warehouse and retail environments, our MB series of versatile mast boom lifts are perfect for stock picking and for working at height in narrow store aisles, but equally at home in industrial maintenance applications.

All Snorkel electric boom lifts with working heights above 13m are equipped as standard with Snorkel Guard™ secondary guarding system.

	MB20J	MB26J	A38E	A46JE
max. working height	8.1m	9.8m	13.5m	16.0m
platform capacity	215kg	215kg	215kg	227kg
stowed height	1.98m	1.98m	2.0m	2.0m
overall length	2.41m	2.8m	4.1m	5.6m
width	0.81m	1.0m	1.5m	1.7m
weight	2590kg	2660kg	3880kg	6486kg



A46JRT

This fast and powerful 4WD rough terrain lift is a leader in its class, delivering a working height of up to 16.3m and outreach of 7.35m. Designed for manoeuvrability in tight spaces, the A46JRT has an inside turning radius of just 800mm - and the boom operates with zero tail swing. The spacious 1.83m x 1m platform can lift two people with tools and the 1.5m jib offers additional flexibility.



A62JRT

The Snorkel A62JRT offers a tight inside turning radius, thanks to its optimized two-wheel steering and zero tail swing. Areas where this lift excels include a maximum platform height of 18.8m and "up and over" clearance at 9.0m. It also has the largest platform in its class and a very compact length when stowed for transport, at 8.5m. The oscillating front axle keeps all four tyres in contact with the ground, whether the boom is stowed or elevated.



AB80J/AB85J

The AB85J is the largest model in Snorkel's articulated boom range, with a working height of 27.7m and outreach of up to 18.8m. The superb "up and over" reach combined with a rotating jib, provide excellent aerial manoeuvrability while 4 wheel drive and 4 wheel steer make it a great performer on any job site. The AB80J provides a working height of 26.4m and shares all the features of the AB85J, minus the rotating jib.

ARTICULATING BOOM LIFTS

Designed for tough job sites, Snorkel's family of articulating boom lifts combine superb manoeuvrability with power and precision. With many class-leading features, these lifts deliver working heights of up to 27.7m and lift capacity for two people plus tools.

Snorkel's articulated boom lifts provide the ultimate working envelope, including superb "up and over" capabilities – and articulated jibs come as standard. A smooth, proportional operating system gives you precise control where you need it most. Designed for a long and productive working life, all Snorkel articulated booms utilize hydraulics and relay controls, making them incredibly easy and low-cost to service and repair.

All Snorkel articulating boom lifts are equipped as standard with Snorkel Guard™ secondary guarding system.

	A46JRT	A62JRT	AB80J	AB85J
max. working height	16.3m	20.8m	26.4m	27.7m
platform capacity	227kg	227kg	227kg	227kg
stowed height	2.16m	2.6m	2.9m	2.9m
stowed length	5.7m	8.6m	9.8m	12.5m
width	2.1m	2.4m	2.6m	2.6m
weight	7540kg	10659kg	16730kg	17500kg



400S/460SJ

The Snorkel 400S telescopic boom lift delivers a working height of up to 14.2m and outreach of 10.1m. For additional flexibility, the 460SJ is the same machine with an added 2m jib boom. The 460SJ delivers a working height of up to 16m and outreach of 12.8m. Designed for construction sites, the 400S and 460SJ deliver up to 50% gradeability thanks to powerful four wheel drive and standard oscillating axle.



600S/660SJ

The Snorkel 600S telescopic boom provides a maximum working height of 20.3m, and is also available as the 660SJ with a 2m jib boom for additional flexibility. The 600S and 660SJ feature Snorkel's innovative 2.44m x 0.91m tri-entry platform, and all proportional boom functions, including jib and platform rotate. The 660SJ can be stowed to just 8.5m length for transport.



TB80/TB86J

The Snorkel TB80 delivers a working height of 26.4m and outreach of 21.7m. Engineered for construction sites, four wheel drive comes as standard. For additional flexibility, we offer the TB86J, the same machine with a 2m jib, providing a working height of 28.2m and outreach of 23.9m.

TELESCOPIC BOOM LIFTS

Snorkel's telescopic boom lifts are designed for tough job sites and are built to last. Powerful diesel engines, superb ground clearance and high torque drive motors combine to deliver excellent rough terrain performance. We engineer simplicity, delivering robust aerial lifts that are easy to operate and easy to service or repair, utilizing hydraulics and relay controls.

The new Snorkel 400S, 460SJ, 600S and 660SJ models are designed with a common chassis helping to improve service engineer expertise and minimizing spare parts inventory. All Snorkel telescopic boom lifts are equipped as standard with Snorkel Guard™ secondary guarding system.

	400S*	460SJ*	600S	660SJ	TB80	TB86J
max. working height	14.2m	16.0m	20.3m	22.1m	26.4m	28.2m
platform capacity	272kg**	272kg	272kg**	272kg	227kg	227kg
stowed height	2.38m	2.38m	2.52m	2.52m	2.9m	2.9m
stowed length	7.57m	8.76m	9.2m	10.5m	11.8m	11.5m
width	2.31m	2.31m	2.46m	2.46m	2.6m	2.6m
weight	7135kg	7829kg	11430kg	12303kg	13644kg	18615kg

*Preliminary specifications ** Unrestricted platform capacity. Restricted platform capacity is 454kg – refer to operator manual for working envelope.



Snorkel 660SJ



TB120/TB126J

The Snorkel TB120 provides a maximum working height of 38.6m and outreach of up to 18.9m. Engineered for construction sites, with powerful four wheel drive as standard, along with a fixed front axle and extendable rear axle. For additional flexibility, we offer the same machine with a 2.0m jib, providing a working height of 40.4m and outreach of 19.2m.

	TB120	TB126J
max. working height	38.6m	40.4m
platform capacity	227kg	227kg
stowed height	3.0m	3.2m
stowed length	12.9m	13.6m
width	2.6m	2.6m
weight	17917kg	19000kg

400S
460SJ
600S
660SJ
TB80
TB86J
TB120
TB126J

TELESCOPIC BOOM LIFTS



TL37J

The TL37J is a high specification trailer that offers excellent value for money. The articulating boom provides a working height of 12.9m and up to 5.6m of outreach. A 1.3m jib with 130° working arc and powered platform rotation provides additional manoeuvrability. Fully proportional live hydraulic controls ensure the TL37J is both simple to use and easy to service or maintain.



TL39

The TL39 is a tough yet compact articulating/telescopic trailer boom and offers a working height of 13.5m with 6.4m of outreach. Weighing under 1,500kg, this machine has a towing length of just 5m. Hydraulic outriggers are standard, with the option of auto-levelling.



TL49J

This 16.7m trailer's articulating/telescopic boom and 130° jib offer a superb working envelope, providing class-leading outreach of 8.5 metres. Live hydraulic controls and heavy duty booms ensure the TL49J is a robust machine that is simple to operate, maintain and repair. A range of power options are available, including bi-energy.

TL-SERIES TOWABLE BOOM LIFTS

Snorkel towable booms lifts are high specification, rugged, reliable trailer mounted boom lifts that are very cost-competitive. The machines are easy and low cost to maintain and simple to operate. Towable with most cars and light commercial vehicles, these are high performance machines that deliver a great return on investment.

Most Snorkel towable boom lifts are available in a range of power options including petrol, diesel, electric and bi-energy. Options include air line to platform, friction drive assist and platform work lights.

	TL37J	TL39	TL49J
max. working height	12.9m	13.5m	16.7m
platform capacity	215kg	215kg	200kg
stowed height	2.1m	2.01m	2.16m
towing length	6.4m	5.0m	7.1m
towing width	1.61m	1.61m	1.72m
weight	1586kg	1480kg	2389kg



SR626

The Snorkel SR626 is a compact rough terrain telehandler, designed to handle the toughest jobsites. At just 1.89m wide, this compact telehandler is ideal for working in confined spaces. It can lift up to 2,600kg and has a maximum lift height of up to 5.79m.



SR1442

The Snorkel SR1442 rough terrain telehandler delivers powerful performance. Designed for durability, this telehandler is fitted with powerful 4-wheel drive, crab steering and outriggers as standard. Rugged and robust, the SR1442 is ideal for construction applications.



SR1745

The Snorkel SR1745 rough terrain telehandler easily handles heavy loads. Built to perform, this telehandler features powerful 4-wheel drive and a 3-section boom for extended reach. Outriggers and leveling capabilities come standard for sturdy performance on any jobsite.

ROUGH TERRAIN TELEHANDLERS

Snorkel telehandlers are robust, reliable, powerful and simple to operate. Like all Snorkel lifts, they are very easy to maintain and deliver a low total cost of ownership.

Featuring an ergonomically designed, fully-enclosed cab, available with air conditioning, Snorkel telehandlers deliver an intuitive experience for the operator, with superior visibility around the machine.

Powerful Tier 4 Final engines and fully automatic hydrostatic drive ensures maximum performance on the job, and proportional joystick controls deliver the ultimate in precision.

	SR626	SR1442	SR1745
max. working height	5.79m	13.5m	16.4m
lift capacity	2600kg	4200kg	4535kg
stowed height	1.93m	2.56m	2.56m
Length to fork face*	4.19m	6.45m	6.6m
width	1.89m	2.3m	2.3m
weight	4700kg	11150kg	12180kg

*Length to fork face = length from carriage to counter weight.



ML12M/ML16M/ML20M

'MLM' models feature a narrow design and ultra-compact reduced mast height to easily navigate through doorways and tight spaces, without requiring a tilt-back system, making them ideal for industrial and warehouse applications where loads are moved throughout a facility.



ML12C/ML18C/ML24C

'MLC' models are designed for heavy-duty and construction applications. The ML12C has 3.5m of lift height with up to 340kg of load capacity while the largest model, the ML24C is capable of lifting up to 295kg at a 0.36m load centre to a maximum lift height of 7.4m.

CONSTRUCTION & MINI MATERIAL LIFTS

Snorkel material lifts offer versatility, durability and best-in-class load capacity. With adjustable loading wheels and quick-fold stabiliser legs, they are easy to transport and are quick and simple to set-up.

Snorkel material lifts feature a dual-handle, shift-on-the-fly, two-speed winch for increased productivity when lifting loads, up to twice as fast as other material lifts on the market. A cable guard and heavy-duty non-marking casters are fitted as standard. The lifts utilise heavy-gauge aluminium extrusions and construction-grade cast metal cable pulleys for a long-working life and maximum return on investment.

The 'MLM' series are mini material lifts designed to easily pass through doorways. The 'MLC' series is designed to handle the demands of tough, construction applications.

	ML12M	ML16M	ML20M	ML12C	ML18C	ML24C
lift height – forks up	3.8m	4.9m	6.0m	4.0m	5.6m	7.4m
max. load capacity*	318kg	295kg	272kg	340kg	318kg	295kg
stowed height	1.59m	1.59m	1.59m	2.2m	2.2m	2.2m
stowed length	0.84m	0.88m	0.91m	0.85m	0.85m	0.85m
stowed width	0.77m	0.77m	0.77m	0.77m	0.77m	0.77m
weight	120kg	135kg	151kg	111kg	141kg	162kg

*0.36m load centre



ML5I/ML10I/ML15I

For low level applications, the ML5I can lift up to 454kg to a height of up to 2.0m. Reaching higher, the ML10I can carry a load of up to 408kg to a maximum height of up to 3.4m, and the ML15I can handle materials up to 363kg to lift heights up to 4.8m. An optional straddle base accommodates larger pallets and retracts to fit through doorways.



ML20I/ML25I

Fitted with stabilizers with non-marking casters as standard, the ML20I and ML25I are the largest two models in the MLI range. Capable of handling loads up to 340kg, the ML20I can reach up to 6.2m, whereas the ML25I can reach heights up to 7.6m with loads up to 272kg. A spring-actuated locking system provides quick and easy deployment and stowage of the stabilizers.

INDUSTRIAL MATERIAL LIFTS

Featuring a dual-handle, shift-on-the-fly, two speed winch as standard, Snorkel's industrial line of material lifts bring unrivaled durability and reliability to all types of material handling applications.

With five models, ranging from 2m to 7.6m, the Snorkel 'MLI' range is built tough, yet compact for easy navigation through narrow aisles and in tight spaces. Best-in-class load capacities maximize productivity on the job, while heavy-gauge aluminium extrusions and cast metal cable pulleys ensure a long working life.

	ML5I	ML10I	ML15I	ML20I	ML25I
lift height – forks up	2.0m	3.4m	4.8m	6.2m	7.6m
max. load capacity*	454kg	408kg	363kg	340kg	272kg
stowed height	1.9m	1.9m	1.9m	1.9m	1.9m
stowed length	0.85m	0.85m	0.85m	0.8m	0.8m
stowed width	0.77m	0.77m	0.77m	0.77m	0.77m
weight	89kg	106kg	122kg	150kg	167kg

*0.36m load centre

NEW



www.snorkellifts.com

SNORKEL IS NOW AT YOUR FINGERTIPS 24/7

Celebrating 60 years in business, Snorkel unveiled a brand new mobile-optimized online presence in early 2019. Designed to significantly enhance the customer experience, a vast range of Snorkel resources are now available digitally, 24 hours a day, 7 days per week at **www.snorkellifts.com**.

THE PLATFORM™

Access an extensive library of Snorkel technical publications, including interactive manuals and bulletins with The Platform™ - Snorkel's new portal for product support. Visit **theplatform.snorkellifts.com** to get started.

THE TOOLBOX™

Direct from Snorkel's product experts, The Toolbox™ is the ultimate resource center for Snorkel owners and operators. Learn how to safely operate and maintain your Snorkel lift from an extensive library of instructional guides and videos on troubleshooting, servicing and more.

...AND MUCH, MUCH MORE.

Visit **www.snorkellifts.com** to quickly find an authorized Snorkel dealer, use the equipment selector tool to identify what type of aerial lift you need, watch product feature videos, request quotes online, and much, much more.



Local Distributor:

CE Specification
© Snorkel 2019

OV0319

Specifications subject to change without notice. Photos and diagrams in this brochure are for promotional purposes only. Refer to appropriate Snorkel operators manual for detailed instructions on the proper use and maintenance.



Snorkel™

Vigo Centre, Birtley Road
Washington, Tyne & Wear
NE38 9DA, UK

T +44 (0) 845 1550 057
F +44 (0) 845 1557 756

www.snorkellifts.com